

Convective flow and the most dangerous perturbation

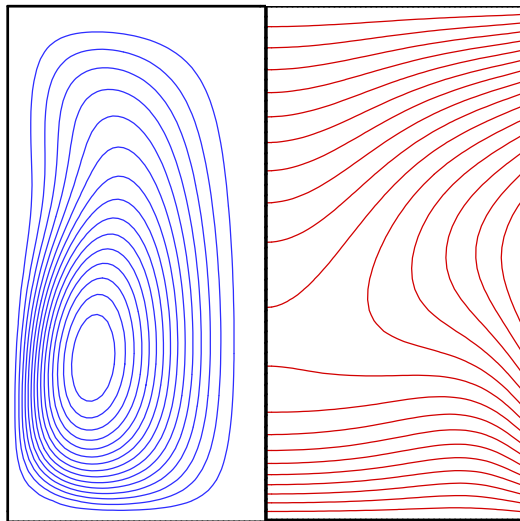
Parabolic heating from the side

Effect of axial magnetic field

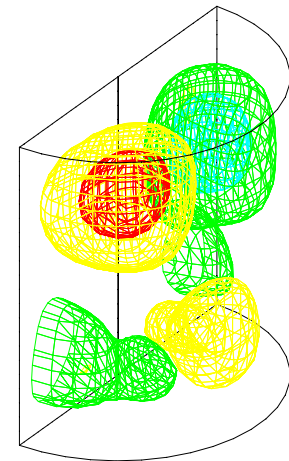
$$A = H/R = 2, \quad Pr = 0.015, \quad Ha = 10, \quad Gr = 347,000, \quad k = 2$$

streamlines

isotherms



Perurbation of temperature



Perurbations of vector potential of velocity

